

# Make Smarter Decisions with Research That Works for You

As an executive, you understand the weight of every decision. In today's energy landscape, the stakes are high—opportunities don't wait, and competitors are always moving. While you can turn to your team for input, sometimes the critical data needed to make a confident, informed decision just isn't there.

That's where Global Energy Infrastructure comes in.

Our custom research provides the detailed, actionable insights you need to lead with confidence. We know your time is limited and the pressure is relentless—that's why we deliver intelligence designed for your needs, enabling you to seize opportunities and stay ahead of the curve.

Here's How We Help You Lead:

- **Tailored Insights:** Forget one-size-fits-all reports. We work directly with you to deliver insights that are as unique as your challenges and priorities.
- **A Global Perspective:** From North America to emerging markets, we identify opportunities wherever they exist.
- **Clear Answers:** Whether you're planning market entry, evaluating competitors, or strategizing for the future, our insights give you the clarity to act decisively.
- **On Your Schedule:** In just 2-3 months, you'll have a report tailored to your needs—so you can make the right decision at the right time.



## The Cost of Incomplete Information

You've worked hard to get where you are, but relying on generic or outdated data could mean:

- Missing out on high-potential markets.
- Making costly missteps based on outdated insights.
- Falling behind competitors who are better informed.

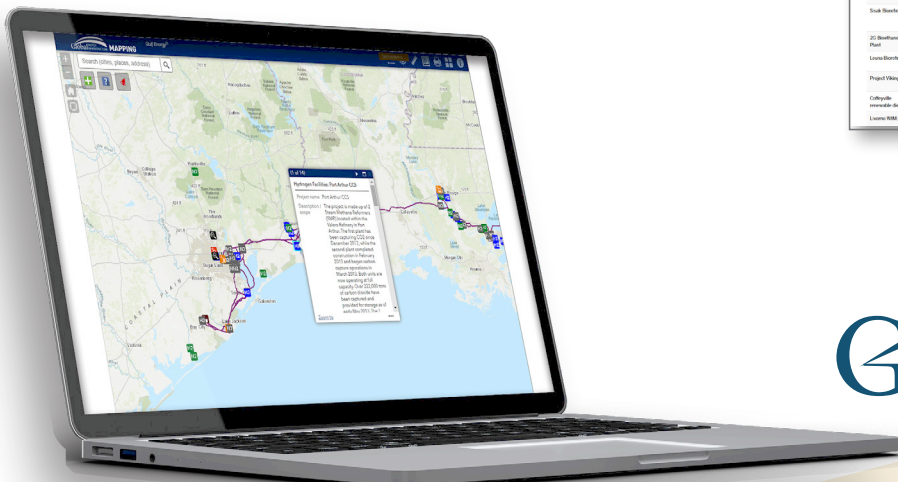
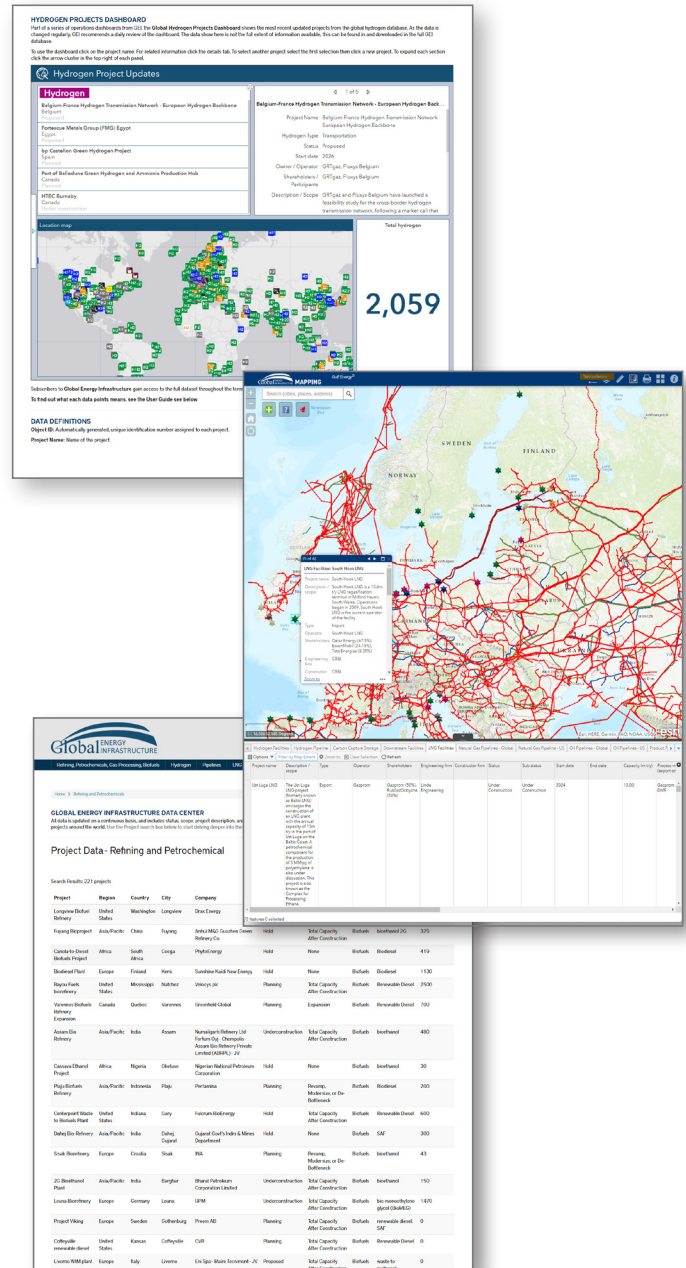
You deserve better than guesswork.

## Let Us Help You Stay Ahead

Global Energy Infrastructure gives you the tools to lead decisively. Our custom research transforms your strategic challenges into your greatest opportunities, so you can drive your business forward.

Schedule a consultation today and discover how we can provide the clarity and confidence you need to succeed.

**Visit [GlobalEnergyInfrastructure.com](https://GlobalEnergyInfrastructure.com) to get started.**



For more information or to get started, please contact Sam Hassaniyeh, Global Sales Manager, [Sam.Hassaniyeh@GulfEnergyInfo.com](mailto:Sam.Hassaniyeh@GulfEnergyInfo.com).

**[GlobalEnergyInfrastructure.com](https://GlobalEnergyInfrastructure.com)**